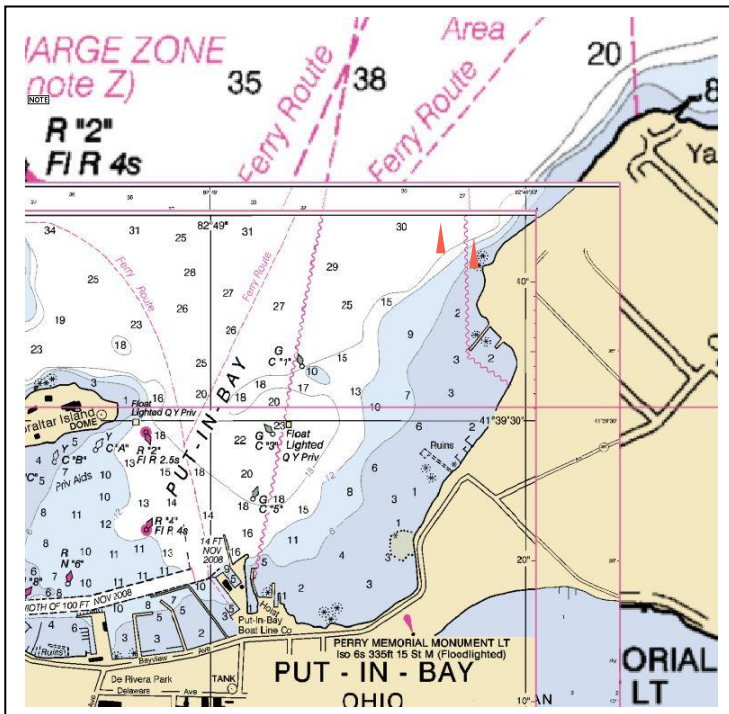
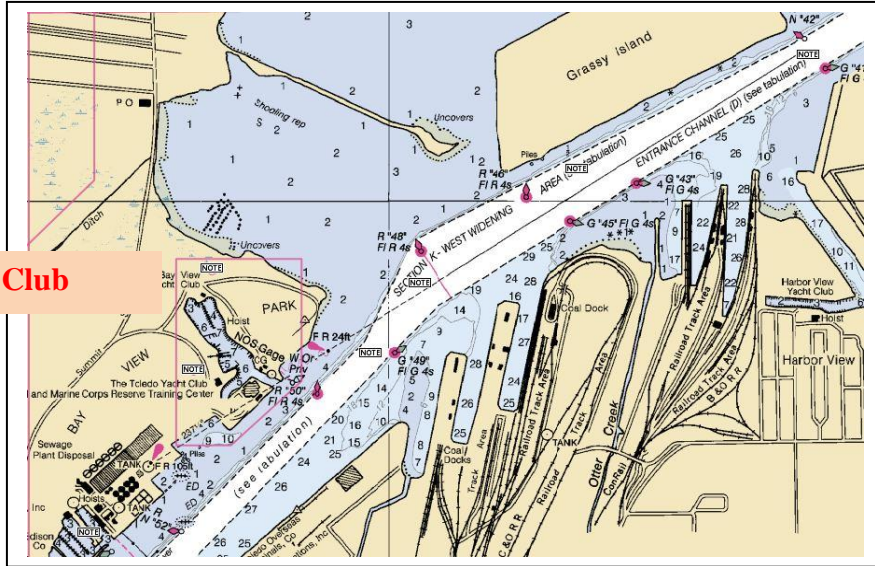


# Attachments A,B,C

## A - Toledo Yacht Club



### Starting Times

One Design Trophy Course 30.50 nm			
15	Preparatory gun 1915 Starting gun 1920	Blue shape Red shape	ONE DESIGN PBBF 165+
16	Preparatory gun 1925 Starting gun 1930	Blue shape Red shape	CLASSICS

Note:  
(a) Any additional class starts will be noted on the bulletin board. The Race Committee may grant a separate start if solicited by a class having sufficient entrants.  
(b) A number designating the start of each class will be displayed from the Race Committee boat during the period prior to the start of that class. Class assignment included in the Skipper's Packet.

### Finish Line Diagram

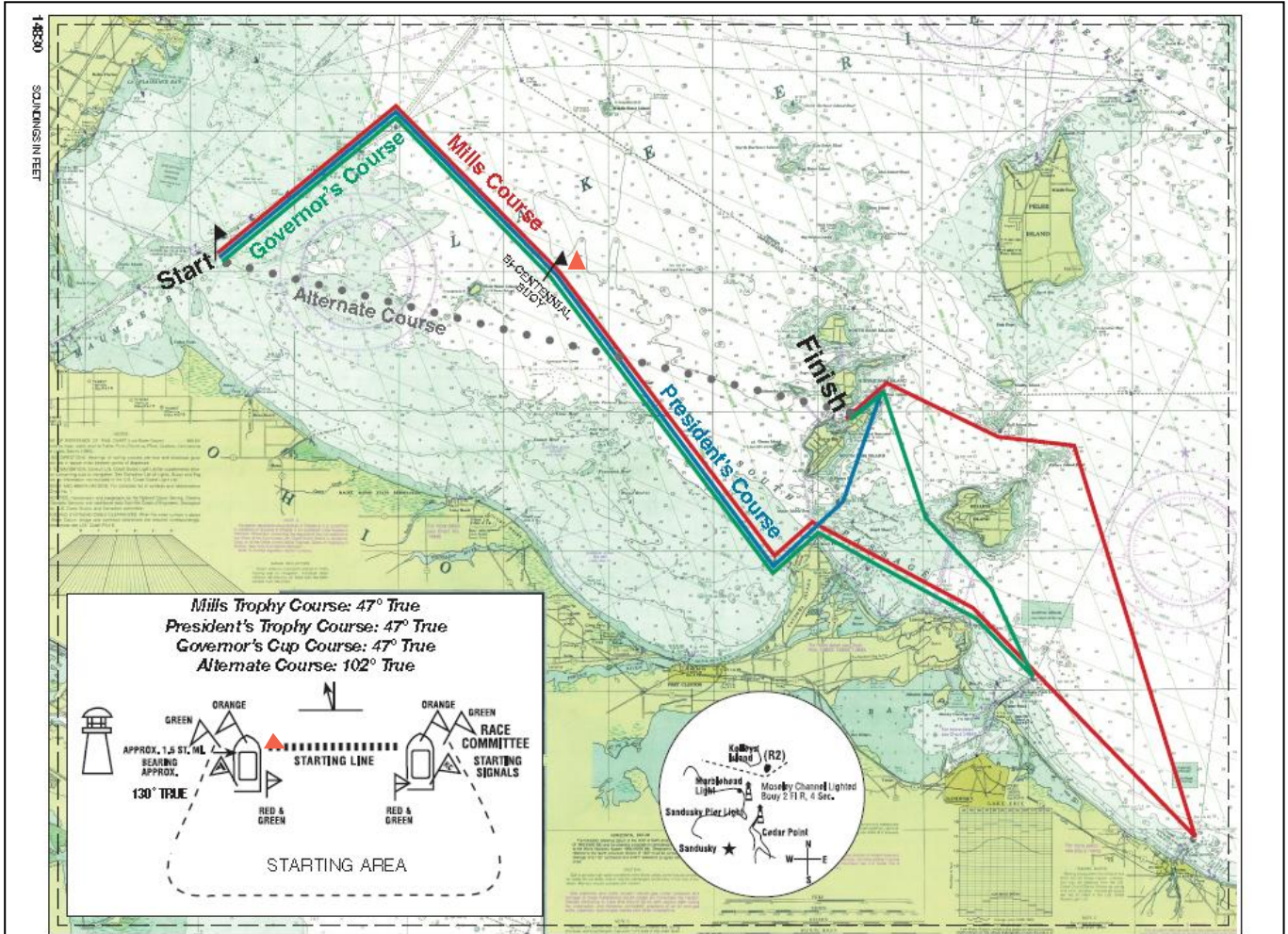
Note: The finishing line is between the white strobe light and the lighted flag pole flying the U.S. pennant located on South Bass Island.  
Note: Protection mark only!

Deckage (will be assigned)

## B - Put-in-Bay

6	Preparatory gun 1745 Starting gun 1750	Blue shape Red shape	PBBF E & F
<b>President's Trophy Course 38.06 nm</b>			
7	Preparatory gun 1755 Starting gun 1800	Blue shape Red shape	DOUBER HANDED 1000-162
8	Preparatory gun 1805 Starting gun 1810	Blue shape Red shape	PBBF I & J
9	Preparatory gun 1815 Starting gun 1820	Blue shape Red shape	PBBF K CREWING CLASS
10	Preparatory gun 1825	Blue shape	JIB & MAIN E
<b>13</b>			
13	Preparatory gun 1855 Starting gun 1900	Blue shape Red shape	JIB & MAIN R
<b>14</b>			
14	Preparatory gun 1905 Starting gun 1910	Blue shape Red shape	JIB & MAIN A

## C - Mills Race Courses



**Notice to All Entrants** The courses represented on this chart are merely linear and directional representations from mark to mark and by no means are they to be relied upon for navigational purposes. An important test of this race is the skill of a navigator and skipper. All skippers and navigators are to take notice of all hazards to navigation.